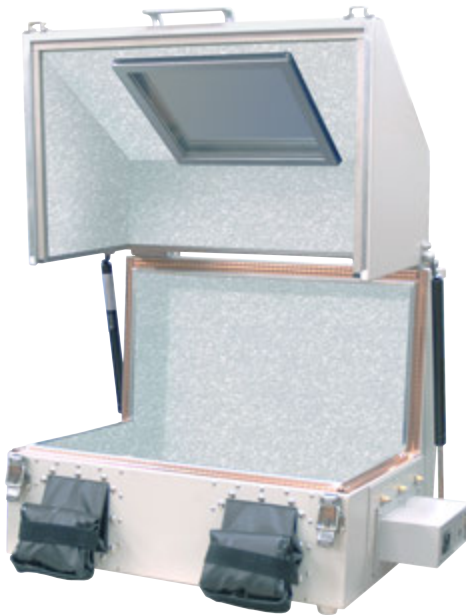
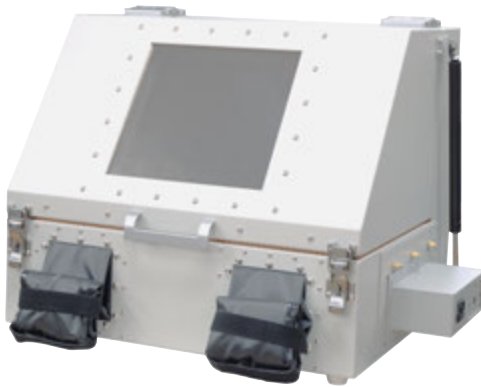


Suitable for weak electric field resistance test, out-of-service test or digital forensics for smart phone, tablet terminal or mobile PC !!
DUT can be operated directly with bare hands while placing it in the box and looking at the inside from the shield window.



Specifications

Outside dimensions	approx. 615(W)×515(H)×518(D)mm (excluding projections)
Inside dimensions	approx. 550(W)×450(H)×450(D)mm
Weight	approx. 21kg(excluding I/F module)
Structure	Double structures with radio wave absorber and aluminum plate
Shielding effectiveness	more than 60dB (600MHz ~ 6GHz)
Reflection loss	more than 20dB (≥2.4GHz)
Shield window	approx. 275(W)×255(D)mm
Connector	SMA 6pcs (Both sides each 3pcs)
Option	<ul style="list-style-type: none"> • I/F module (possible of installing one module of IFM1 to IFM6 on the back.) • Conduction arm supporter (MY3700-002) • LED light (battery drive, MY3700-102)

Features

- DUT can be operated with bare hands.
- Providing wide viewing angle using large shield window
- Optional I/F modules from IFM1 to IFM6 correspond to the various interfaces.

I/F module

I/F module is equipped with AC power supply, DC power supply, LAN,USB, SMA, BNC, N, Triaxial, D-sub connectors and Through pipe.

The I/F module can be easily replaced if needed.

Model	Equipped connectors
IFM1	AC(1pc), LAN(1pc), USB(1pc), D-sub9pin(1pc)
IFM2	AC(1pc), LAN(2pcs), USB(2pcs), D-sub9pin(1pc)
IFM3	AC(1pc), LAN(2pcs), USB(2pcs), D-sub25pin(1pc)
IFM4	DC(1pc), LAN(1pc), USB(1pc), D-sub9pin(1pc), D-sub25pin(1pc)
IFM5	SMA(2pcs), BNC(2pcs), N(2pcs), Triaxial(2pcs)
IFM6	Through pipe (2 kinds are selectable.) ※Inner diameter is different depending on the frequency band.

※MICRONIX Corporation reserves the right to make changes in design, specification and other information without prior notice.

MICRONIX
MICRONIX CORPORATION

2987-2, KOBIKI-CHO, HACHIOJO-SHI, TOKYO 193-0934 JAPAN

TEL : +81-42-637-3667 FAX : +81-42-637-0227

URL : <http://www.micronix-jp.com> E-mail : micronix_e@micronix-jp.com

AGENCY