

Conducted EMI Test System combining MSA series and another maker's LISN

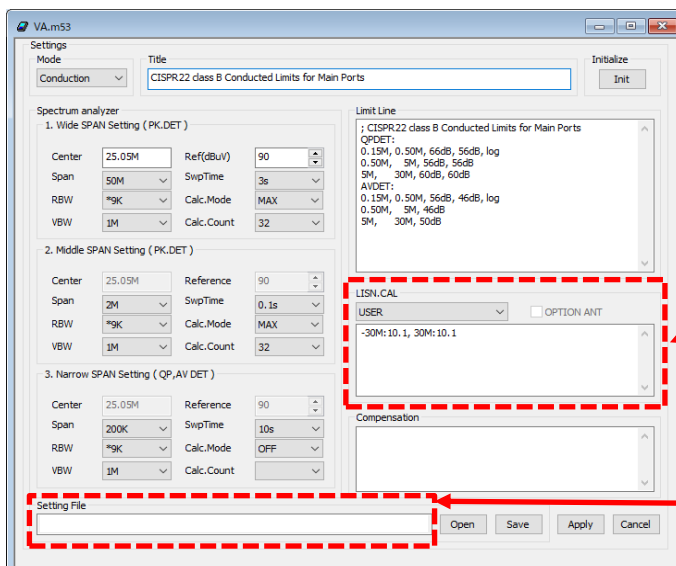
◇Conducted EMI test of DC power supply or 3-phase power supply is possible by combining MSA series and another maker's LISN.

[~*Application*~]

In MR2150, a pre-compliance system for conducted EMI tests using a spectrum analyzer or a signal analyzer for EMI measurement manufactured by MICRONIX, not only MPW201B manufactured by MICRONIX but also another maker's LISN can be used. By using the other maker's LISN, MR2150 can be used for DC power supply, 3 phase power supply or more 250V/15A power supply products.

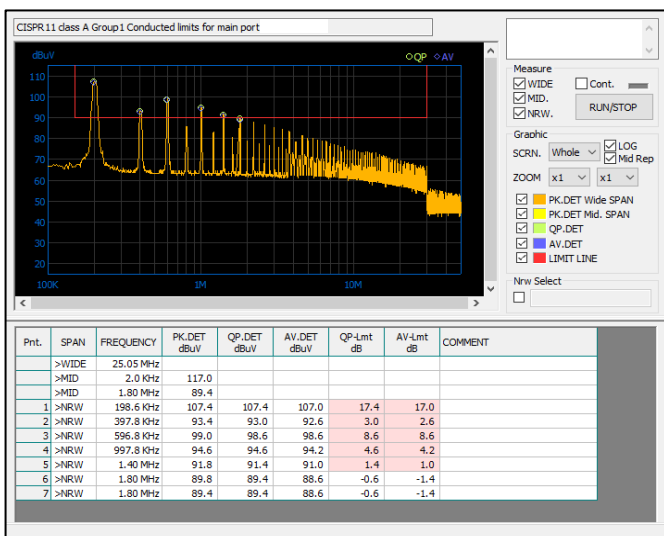
[~*Solution*~]

The setting and measurement examples of PC software MAS 530 for EMI measurement of the MR2150 when using another maker's LISN capable of measuring DC power supply are shown below.



Correction can be done by entering calibration coefficients of the other maker's LISN in this column.

According to a request, we will provide a measurement condition MAS530 file with calibration coefficients of another maker's LISN.



It is a measurement example with another maker's LISN that can measure DC power supply. The operation method of software does not change when MPW201B made by MICRONIX is used or when using another maker's LISN. Therefore, if you are using MPW201B and you need to measure with EUT of power supply that can not be measured by MPW201B, you can perform the same measurement as before only by adding another maker's LISN.

[~*System constitution*~]

- Conducted EMI Test System MR2150 × 1

※MICRONIX Corporation reserves the right to make changes in design, specification and other information without prior notice.

2018/12